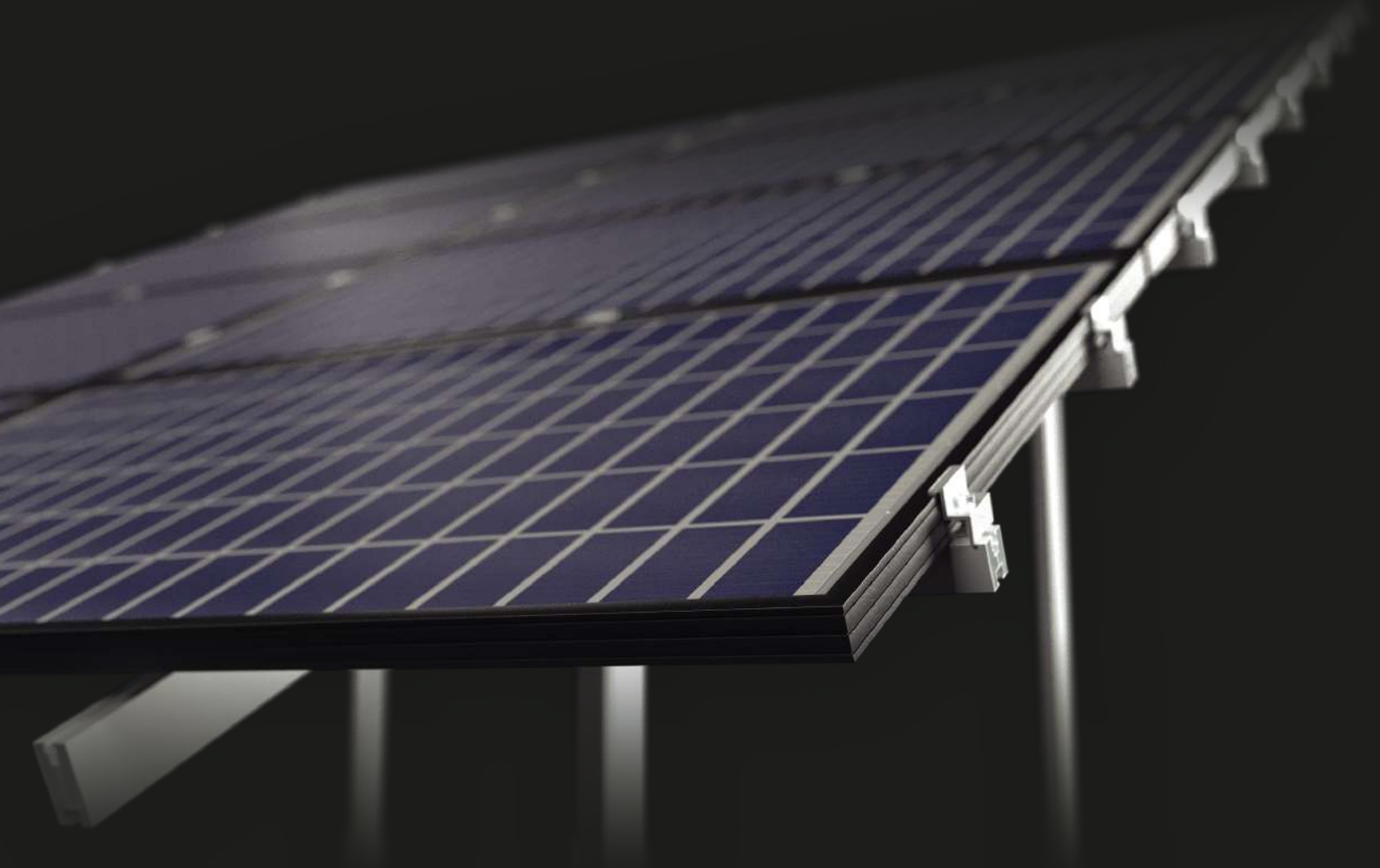


Construction elements

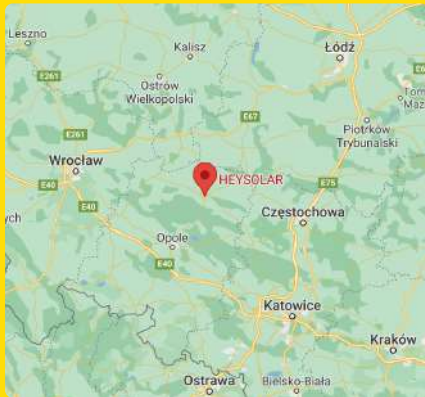


Who we are?

We are a manufacturer of photo-voltaic structures specializing in providing innovative assembly solutions panels on roofs and on the ground.

How can you find us?

Our headquarter and production halls are located in Kluczbork at Katowicka 8A Street.

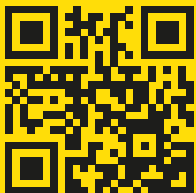


Contact

Heysolar Sp. z o.o.
Katowicka Street 8A,
46-200 Kluczbork

mobile: +48 515 500 888

contact@heysolar.eu



Certificates

Thanks to constant development, we can boast of numerous certificates that testify to the durability of our products.



certificate	
CONFORMITY OF THE FACTORY PRODUCTION CONTROL	
2451-CPR-EN1090-2015.0595.004	
In compliance with Regulation (EU) 2017/1353 of the European Parliament and of the Council of 9 March 2017 (The Construction Products Regulation or CPR), this certificate applies to the construction product:	
construction product	structural components and kits for steel structures to EXC2 according to EN 1090-2
purpose	for load-bearing structures in all types of buildings
CE marking method	ZA.3.2 to ZA.3.5 according to EN 1090-1:2009 +A1:2011
manufacturer	ATHLETIC Sp. z o.o. ul. Katowicka 8a PL 46-200 Kluczbork
manufacturing plant(s) <small>production facility(ies) of the manufacturer</small>	ATHLETIC Sp. z o.o., ul. Tadeusza Kosciuszki 4a PL 48-300 Nysa ATHLETIC Sp. z o.o., ul. Katowicka 8a PL 46-200 Kluczbork
confirmation	EN 1090-1: 2009+A1:2011
date of first issue	2015-05-12
Next surveillance audit	2024-05-11
period of validity	This certificate will remain valid as long as the test methods and/or the factory production control requirements included in the harmonised standard used to assess the performance of the declared characteristics do not change, and the product and the manufacturing conditions in the plant are not modified significantly.
remarks	-
place/date of issue	Düsseldorf/2021-05-04
certification body	DVS ZERT GmbH (DVSZERT)
additional information	
range of production	<ul style="list-style-type: none"> calculation production (cutting - haling - forming, welding, mechanically connecting, corrosion protection)
associated welding certificates	DVS ZERT-EN1090-3-SZ-2015.0040 (DVS ZERT GmbH, gültig bis 11.05.2024)

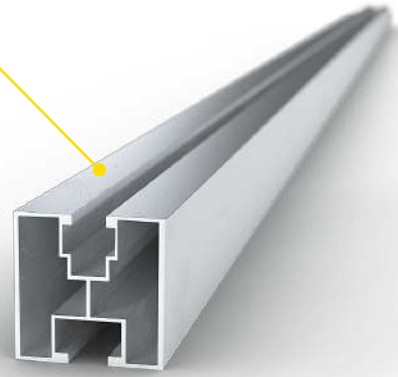
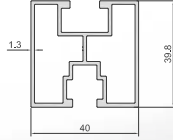
welding certificate	
DVS ZERT-EN1090-3-SZ-2015.0003.003	
manufacturer	ATHLETIC Sp. z o.o., ul. Katowicka 8a PL 46-200 Kluczbork
welding factory	ATHLETIC Sp. z o.o., ul. Tadeusza Kosciuszki 4a PL 48-300 Nysa ATHLETIC Sp. z o.o., ul. Katowicka 8a PL 46-200 Kluczbork
technical specification	EN 1090-3:2019
execution class	EXC2 according to EN 1090-3:2019
welding process(es) <small>(reference to DIN EN ISO 4063)</small>	141 - TIG gas tungsten arc welding 142 - Autogenous TIG welding
material group	22, 23 according to CEN ISO/TR 15608 and EN 1090-3 (2019), table 1 and 2
responsible welding coordinator <small>(Title, Surname, Name, Qualification)</small>	Jakub Kozłowski, IWE
substitute <small>(Title, Surname, Name, Qualification)</small>	Patryk Sliwka, Level B
remarks	The requirements for work tests are to be observed acc. to DIN EN 1090-3.
Confirmation	All provisions concerning welding as described in the above technical specification(s) were applied.
begin of validity	2018-05-12
period of validity	2024-05-11
place/date of issue	Düsseldorf/2021-05-04
certified body	DVS ZERT GmbH (DVSZERT)

Mounting profile (40mm x 40mm)

Height	Width	Length	Material
40mm	40mm	2200mm 3300mm 4400mm 6600mm	Aluminum

Aluminum rail 40x40 for mounting photovoltaic installations on the roof. The profile is made of aluminum.

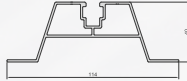
*Possibility of cutting the profile according to individual orders.



Trapezoidal roof rail T40

Height	Width	Length*	Material
40mm	114mm	300mm 330mm 400mm	Aluminum, Polyethylene

Low trapezoidal roof rail with EPDM tape used for mounting photovoltaic installations on trapezoidal metal sheet covered roofs. The roof rail is made of aluminum.

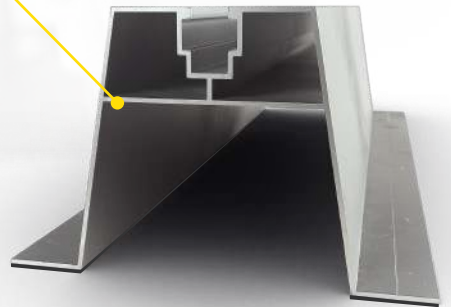
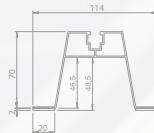


*Possibility of cutting the profile according to individual orders. !*The roof rails are glued with EPDM tape.

Trapezoidal roof rail T70

Height	Width	Length*	Material
70mm	114mm	300mm 330mm 400mm	Aluminum, Polyethylene

Middle trapezoidal roof rail with EPDM tape used for mounting photovoltaic installations on trapezoidal metal sheet covered roofs. The roof rail is made of aluminum.



*Possibility of cutting the profile according to individual orders. !*The roof rails are glued with EPDM tape.

Trapezoidal roof rail T100

Height	Width	Length*	Material
119mm	100mm	330mm	Aluminum, Polyethylene

Middle trapezoidal roof rail with EPDM tape used for mounting photovoltaic installations on trapezoidal metal sheet covered roofs. The roof rail is made of aluminum.

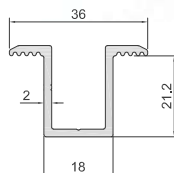


*Possibility of cutting the profile according to individual orders. !*The roof rails are glued with EPDM tape.

Middle clamp

Height	Material	Color
24mm	Aluminum	Silver Black

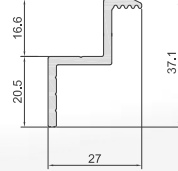
Universal central mounting clamp for photovoltaic panels installation



End clamp

Height	Material	Color
30mm	Aluminum	Silver
35mm		
40mm		

End clamp for mounting photovoltaic panels.

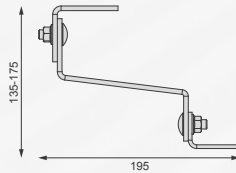


Vario hook

Length	Material
195mm	Stainless steel

VARIO double adjustable hook. Used for roofs covered with ceramic or concrete roof tiles.

*Hook included with screws - twisted.

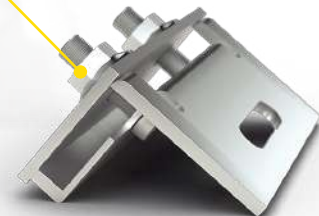
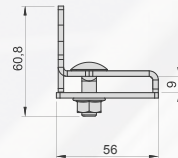


RB-3 hook

Height	Width	Length	Material
60,8mm	56mm	100mm	Stainless steel

Hem type handle/hook. The hook is used for installation of photovoltaic panels on roofs covered with seams.

Adjustment hole 40x11mm. Supplied with screws - twisted.

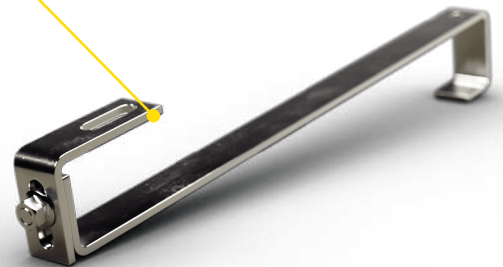
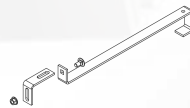


S468 hook

Height	Width	Length	Material
109mm	30mm	468mm	Stainless steel

Adjustable S-type hook. Used for covered ceramic or concrete roof tiles roofs.

*Hook included with screws - twisted



Shingle hook

Height	Thickness	Length	Material
88mm	5mm	246mm	Stainless steel

Adjustable "J" type hook. Used for roofs covered with shingles.

*Hook included with screws - twisted. Glued with EPDM tape.

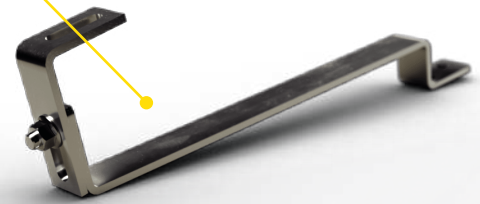


Plain roof type hook

Length	Thickness	Material
400mm	5mm	Stainless steel

Adjustable hook. Used for covered plain roofs.

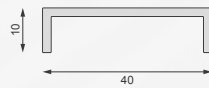
*Hook included with screws - twisted



TYPE-2 grounding washer

Height	Width	Length	Material
10mm	40mm	40mm	Stainless steel

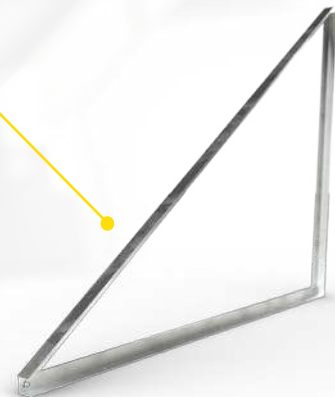
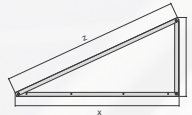
Grounding washer/plate used for equalization potentials of frames, structures and photovoltaic modules.



Mounting triangle VERTICAL

Tilt angle	Material	Color
15°	Aluminum	Silver
20°		
25°		
30°		

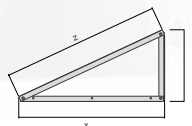
Vertical aluminum mounting triangle with an inclination angle of 15°, 20°, 25°, 30° degrees for mounting photovoltaic panels on a flat or low-slope roofs.



Mounting triangle HORIZONTAL

Tilt angle	Material	Color
15°	Aluminum	Silver
20°		
25°		
30°		

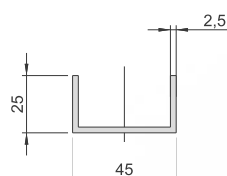
Horizontal aluminum mounting triangle with an inclination angle of 15°, 20°, 25°, 30° degrees for mounting photovoltaic panels on a flat or low-slope roofs.



Rail connector

Height	Width	Length*	Material	Color
25mm	45mm	100mm 120mm	Aluminum	Silver

Aluminum connector for mounting rails used for PV installation.



Carport

1. Structural steel with increased strength
2. Support spacing: 6,28
3. Galvanized
4. Anti-corrosion coating
5. Assembly: To the foundation

Additional options:

- Inverter mounting,
- Tight roof,
- Electric charger holder with LOGO option,
- RAL color.



Two-support ground construction



1. S350GD structural steel
2. Magnelis® ZM430 and ZM310
3. Two rows vertically
4. 30° degrees
5. Driven into the ground



Two-support ground construction - rooted system



Ground structure - east-west ballast



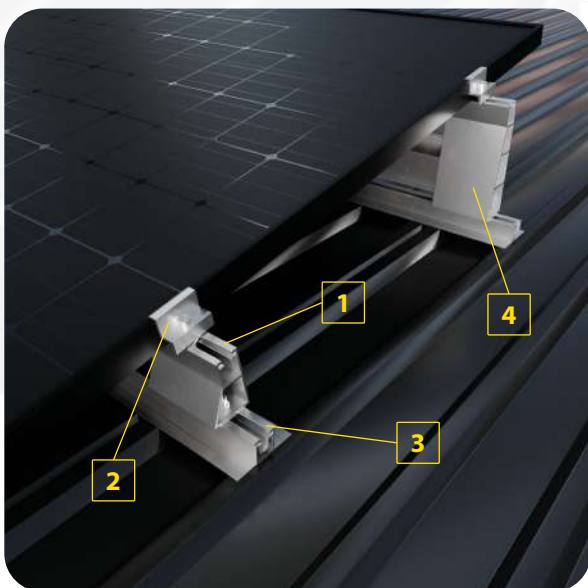
East-west ground construction assembled with adjustable feet for foundations or road slabs.

The Container Photovoltaic construction



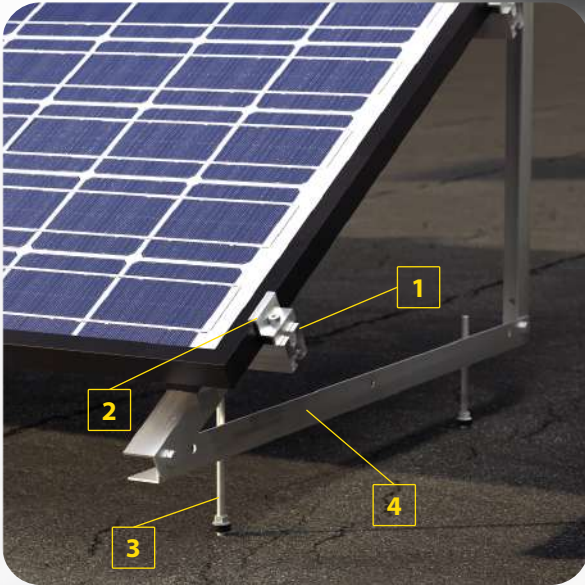
Container construction, used on construction sites or outdoor events.
Thanks to its modularity, it can be easily moved between locations when necessary.

EcoMount - Vertical and horizontal invasive construction



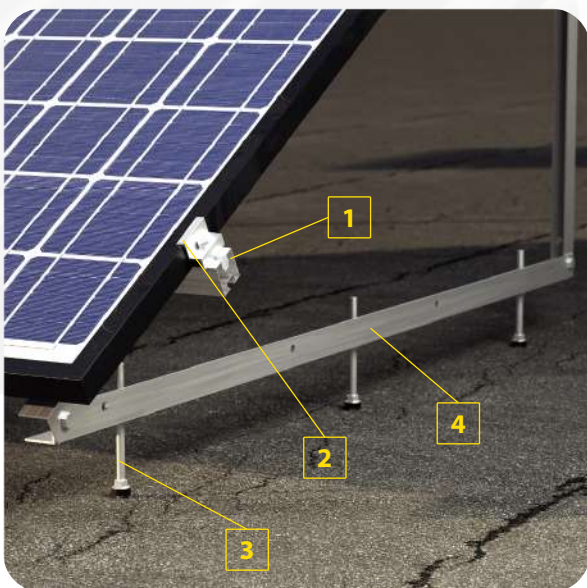
1. Low bracket
2. End clamp, allen screw, nut
3. Bridge H30 L330
4. High bracket

Invasive horizontal construction



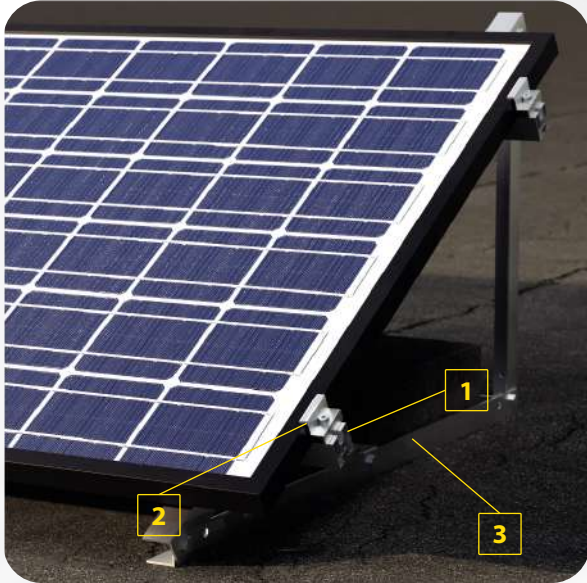
- 1. 40x40 mounting profile
- 2. End clamp, allen screw, nut
- 3. Double thread
- 4. Assembly triangle

Invasive vertical construction



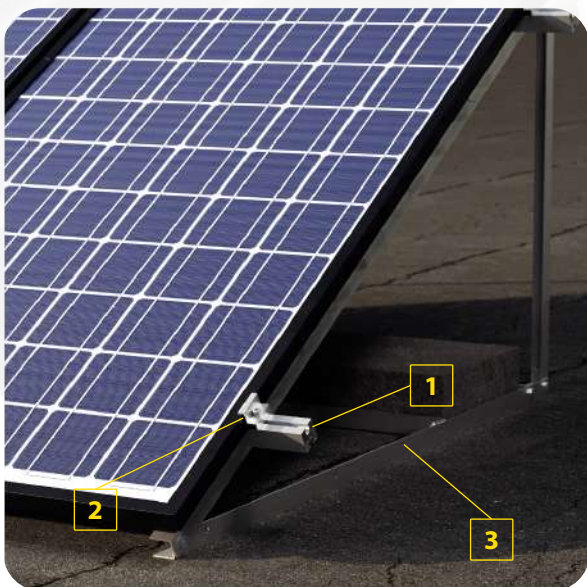
- 1. 40x40 mounting profile
- 2. End clamp, allen screw, nut
- 3. Double thread
- 4. Assembly triangle

Ballast horizontal construction (on squares)



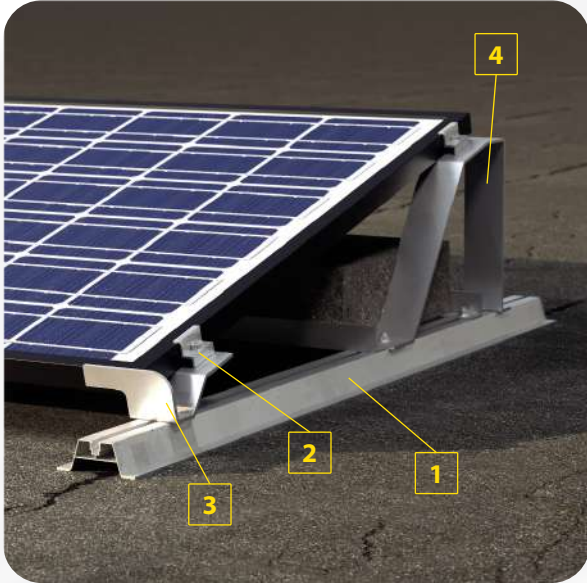
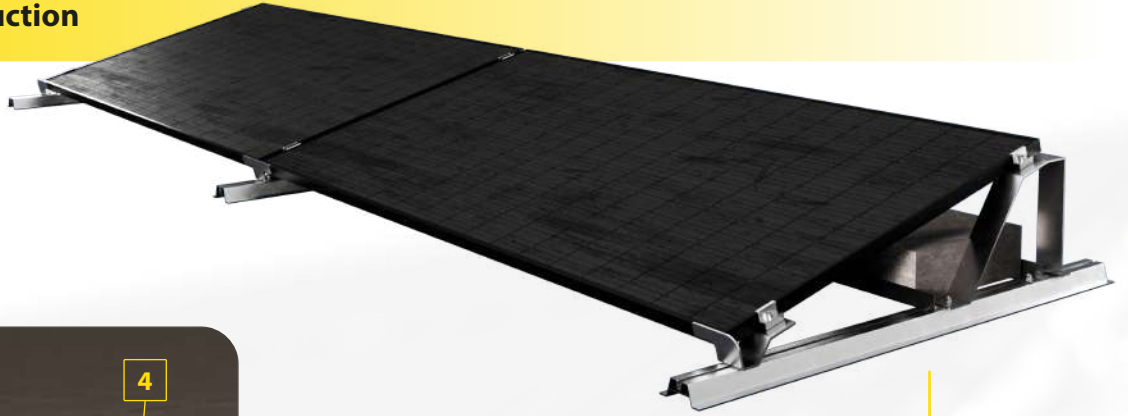
- 1. 40x40 mounting profile
- 2. End clamp, allen screw, nut
- 3. Assembly triangle

Ballast vertical construction (on squares)



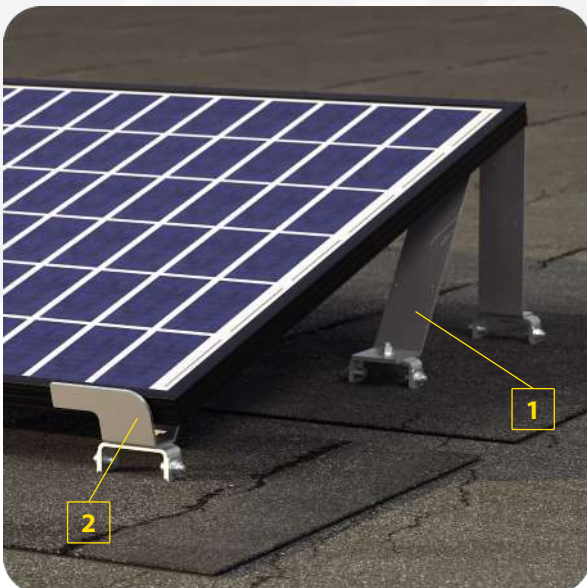
- 1. 40x40 mounting profile
- 2. End clamp, allen screw, nut
- 3. Assembly triangle

Ballast AERO construction



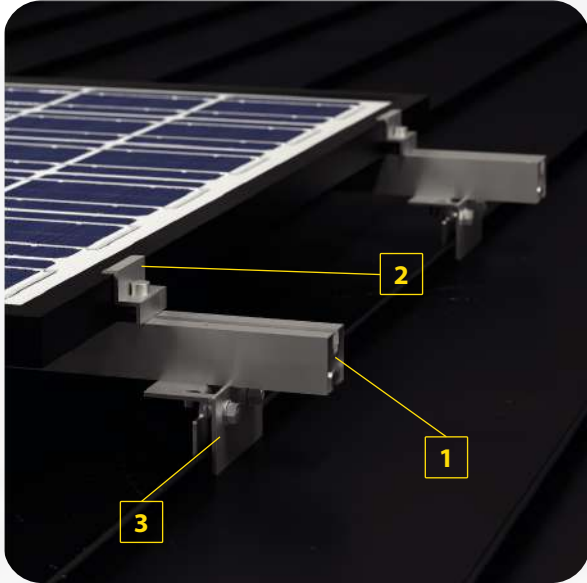
- 1. Trapezoidal bridge
- 2. End clamp, allen screw, nut
- 3. Right base 15°
- 4. High base 15°

Glued AERO construction



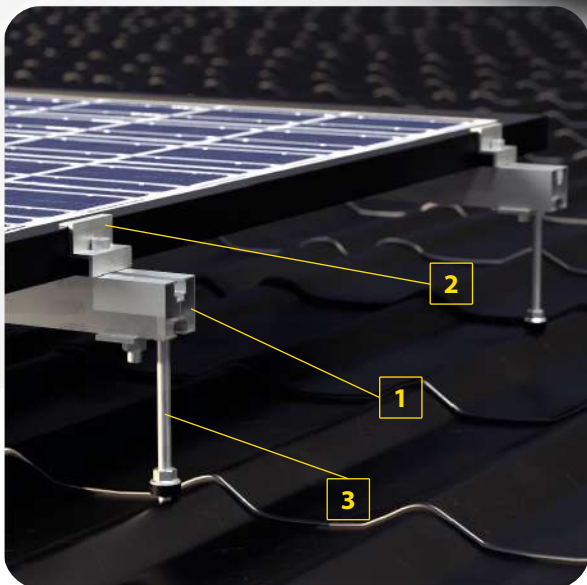
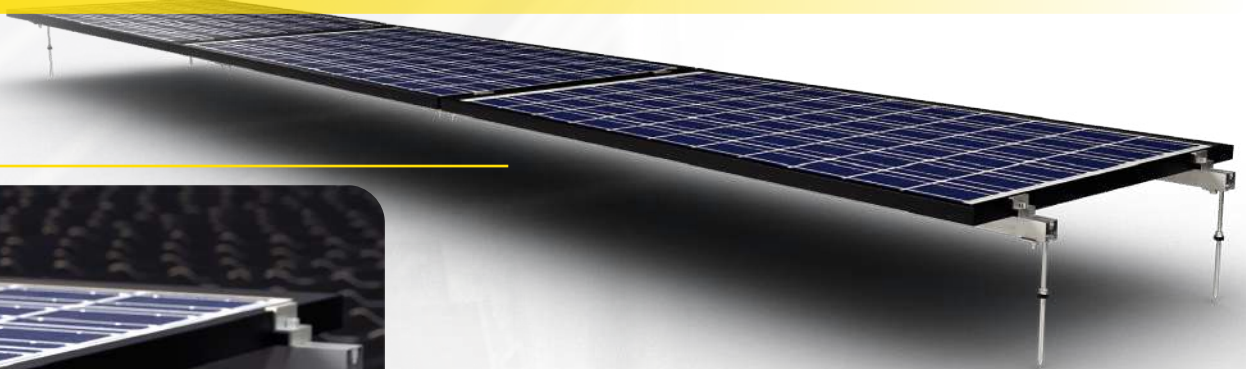
- 1. High base 15°
- 2. Right base 15°

Mounting system for metal sheet with a seam - seam holder



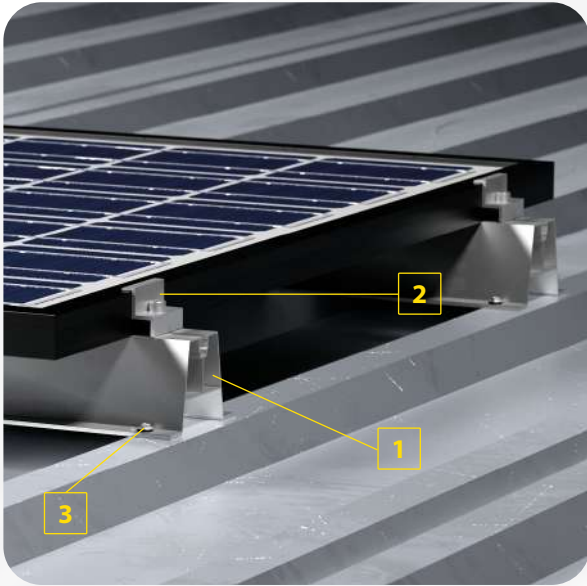
- 1. 40x40 mounting profile
- 2. End clamp, allen screw, nut
- 3. RB-3 metal seam holder

Mounting system for metal roof tiles - double-threaded screws



- 1. 40x40 mounting profile
- 2. End clamp, allen screw, nut
- 3. Double-threaded screw + M10 adapter

Mounting system for trapezoidal metal sheet - trapezoidal roof rails



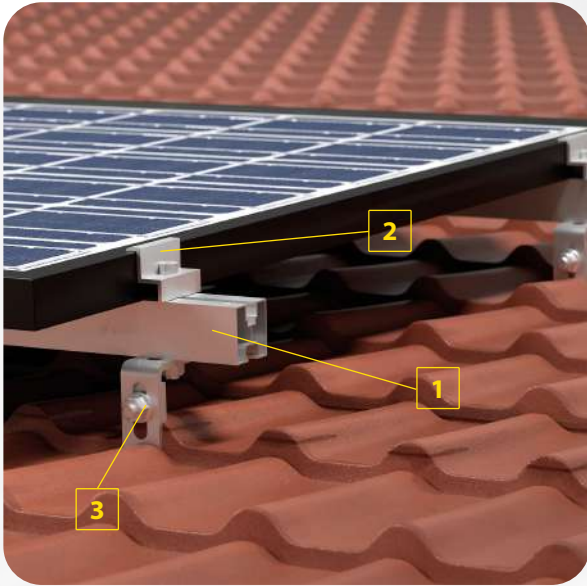
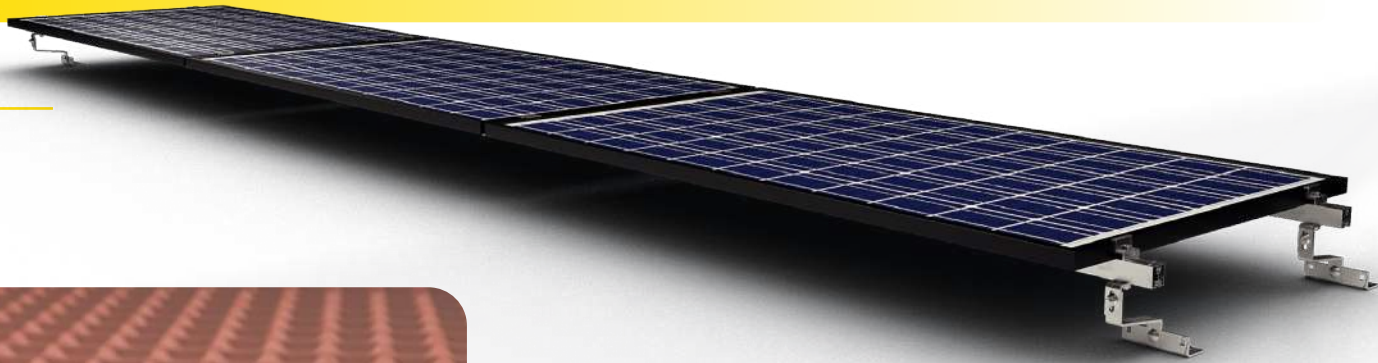
- 1. Trapezoidal bridge T70 L=400
- 2. End clamp 35 mm
- 3. Self-tapping screw with EPDM washer

Roof tile mounting system - plain roof type hook



- 1. 40x40 mounting profile
- 2. End clamp, allen screw, nut
- 3. Paw under the tiles

Ceramic roof tile mounting system - Vario hook



- 1. 40x40 mounting profile
- 2. End clamp, allen screw, nut
- 3. Two-adjustable Vario hook

FV pole holder



- 1. 35 mm end clamp
- 2. 40x40 mounting profile
- 3. Supporting angle

Stand for electric charger

The post is intended for mounting a charging station and electric car chargers. Installation to the floor or to prepared foundation using appropriate M12 anchors (not included in the set due to the variety of solutions). Universal use for devices from leading manufacturers.

Dimensions: 260x260x1400mm
Weight: 18,3kg



Stand under the heat pump or air conditioner



The stand is used to mount outdoor units and air conditioners heat pumps. The design of the stand allows it to be perfectly matched to a specific device model. Thanks to the possibility of change spacing of connectors. Surface irregularities are eliminated by feet with adjustment screws. The stand is made of stainless steel 2 mm thick - load capacity 300 kg.

The set includes:

- supporting structure,
- 4 feet under the structure,
- a set of fasteners for assembling the structure and installing it heat pump/air conditioner.



www.heidsolar.eu
Heysolar Sp. z o.o.
Katowicka Street 8A,
46-200 Kluczbork

e-mail: contact@heidsolar.eu
mobile: +48 515 500 888